

WE WALK THE TALK

Sustainability. It's a way of life for Oregonians and has been for decades. And since Oregon has always been ahead of the curve when originating sustainability programs, it's no coincidence that Portland, RFM's home, was ranked as the greenest city in America by *Popular Science* magazine in February 2008. As an Oregon-based company, and MAS Green certified, RFM Preferred Seating takes this heritage very seriously to protect the environment for future generations. It's part of our mind-set and incorporated in every aspect of our manufacturing and distribution process.

It's What's Inside that Counts

RFM has gone the distance to ensure that we use the highest content of recycled material in the creation of our chairs while maintaining the strength and durability. The following is the breakout of the recycled material content of our chairs:

Casters	90% recycled material in plastic/nylon
Bases	67% post industrial material
Cover Cans	100% post industrial material
Seat Sliders	20% recycled material in metal, 100% recycled material in plastic
Controls	20% recycled material in metal, 100% recycled material in plastic
Arms	20% recycled material in metal, 100% recycled material in plastic
Seat and Back Wood	Made from Poplar trees, a highly sustainable wood product grown at tree farms in the United States.
Metal Frames	93% reclaimed steel
Boxes	Manufactured out of 40% post consumer material
Glue	We use a new HVOC-free, water-based glue developed by 3M for laminating foam, seats and backs. It is certified to GREENGUARD™ product emission standard for children and schools.
Metal Components	All of the metal components have a powder-coat paint finish that emits negligible Volatile Organic Compounds (VOCs)

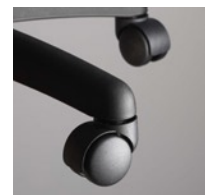
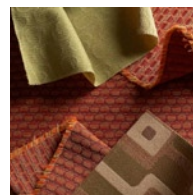
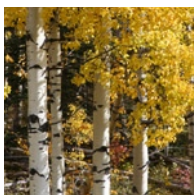
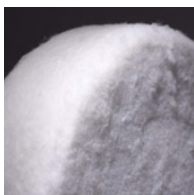
Boxed In?

Not necessarily. At RFM, we explore all options for the shipment of your order and try to eliminate boxing chairs whenever possible. With manufacturing plants located in Oregon and Kansas, we are often able to ship chairs on pallets or blanket wrapped to save resources and reduce our carbon footprint. When we do use cartons, we use the smallest boxes possible enabling us to ship more boxes per truck thus reducing fuel consumption and emissions. To ensure the strength of the box, and to reduce damage in shipping, we use ones manufactured from 40% post consumer waste that are naturally 100% recyclable

More than Just a Pretty Fabric

Oregon is an innovator when it comes to the green movement and as such, we were the first in the nation to develop a bottle bill in 1971. When consumers purchase any beverage in a can or plastic bottle, they pay retail stores 5-cents deposit to the retailer. Distributors pay retail stores the 5-cent redemption for each container returned to the distributor for recycling. As a result of the success of this program, ten other states operate similar programs. Recycling a ton of plastic bottles saves approximately 3.8 barrels of oil and uses 2/3 less energy than using raw (virgin) materials. The recycled containers are used to make hundreds of products including fabric, which is used for our chairs. Not only do we have a variety of green fabrics available created from pop bottles and recycled fabrics, but we also offer PVC-free vinyl options.

In addition, RFM purchased a state-of-the-art computerized fabric cutting machine, which substantially reduced fabric waste. The amount reduced is 34,000 square feet of fabric per year – or enough for 1,500 task chairs.



ENVIRONMENT

WALKING THE TALK

Once is Not Enough

All employees from production to the administrative offices recycle waste ranging from printer cartridges to paper and cardboard. Each workstation has a container to recycle paper and it is picked up weekly, because of a statewide recycling program. Even our break rooms have containers available to recycle aluminum, tin, plastic and paper products.

In the manufacturing area, RFM has implemented recycling programs for all of our waste products. Our company goal is zero waste by 2010 and we are constantly seeking ways to improve our performance by reviewing vendors in our supply chain who share similar sustainability company cultures. The following are examples of the progress we have made in achieving this goal:

Wood: 100% of all scrap wood created in the manufacturing process is recycled. All pallets used in shipping are reused and any remaining ones are recycled through local sources.

Cardboard: 100% of the cardboard used in shipping is recycled.

Foam: All seating foam used is free from polybrominated diphenyl ethers (PBDES). 100% of all scrap foam produced in the manufacturing process is sent back to our foam supplier to be recycled back into reclaimed product.

Metal: 100% of all scrap and defective metal parts are recycled locally.

The Paper Trail Ends Here

At RFM, we print all of our brochures using recycled paper certified by the Forest Stewardship Council from certified sustainable forests. To be able to use the FSC logo, the product must have flowed through the FSC chain-of-custody from the FSC-certified forest, to a paper manufacturer, merchant and finally printer who have FSC chain-of-custody certification. Roughly 25% of timber cut (by volume) annually in the United States is used for paper production. To help reduce the use of extra paper, RFM posts all brochures and Pricers on our website. In addition, all chair assembly and adjustment instruction guides are available online and we will continue this trend in the future.

Waste Not Want Not

That's our mantra at RFM; we do our best to conserve energy. Within the past few months, RFM has undergone several facility renovations to reduce our consumption of energy. Here are several examples:

Facility: RFM completely reorganized and restructured our production facility to house all production personnel into one building. This reduced our energy use by 50% by minimizing the use of lighting and heating.

Heating and cooling: We installed an insulated drop ceiling and two new 90% efficiency Energy Star® gas furnaces in our production area. This reduced our natural gas consumption by 33% over the same period last year and lowered cooling costs.

Administrative Office Lighting: We reduced the amount of electricity used in the administrative area in half by installing high efficiency, pure light fluorescent light bulbs. These bulbs are low mercury lamp, TCLP compliant (Enviro Safe®).

Tinted Windows: This past summer, RFM had all windows at the main production facility treated with a special coating to conserve energy. The tint has a 70% reduction in glare, 99% UV rejection, 67% solar energy rejection, and 20% reflection of interior lighting.

In It for the Long Haul

RFM chairs are manufactured to exacting standards with quality craftsmanship and beautiful designs that are built to last for years. To minimize component waste and replacement, RFM offers metal frames and cylinders which carry a lifetime warranty, while other components are covered for twelve-years. Quality counts and to discourage disposal of any RFM product, our components are designed to be replaced or refurbished throughout the life of the product eliminating waste and filling landfills with the disposal of broken chairs.

The long haul—that's what it is all about at RFM. From the quality chairs we have been manufacturing for over 30 years to incorporating the latest innovations in sustainable practices in materials and production. RFM is committed to bringing you chairs that last over time with a fit that is Good for Every Body.

